

B&C ID.601 /WOMEN > JW 161

LIGHT WEIGHT JACKET / WITH LINING

Forward seams on shoulders for better protection

BASIC
BY B&C



Ergonomic hood
Hood concealed inside the collar with Velcro® closing tabs

MEDIUM FIT

The best deal windbreaker with tricot thermo lining

- 100% 210T taffeta polyester with acrylic coating (AC)
- Body lining: 100% polyester tricot
Sleeves lining: 100% taffeta polyester
- S - M - L - XL - XXL
- 5 pcs/pack & 30 pcs/carton

2015 NEW STYLE



Self fabric lining inside collar

Full zip opening with zip pull

Ergonomic side panels

2 front pockets with overlap

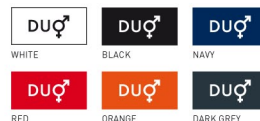
Elasticated cuffs

Open back for easy access for decoration

Adjustable bottom hem (with drawcord adjusters)

Feminine cut

Essential contemporary look

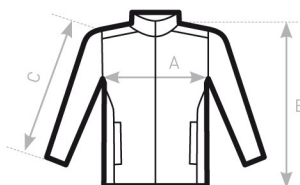


- Windproof
- Showerproof
- Water-repellent
- Thermo-isolated

www.giletgiubbotti.com
VESTI IL TUO MARCHIO



DUO
CONCEPT
with B&C ID. 601



SIZES [CM]

B&C ID. 601 /WOMEN JW 161	XS	S	M	L	XL	XXL
A HALF CHEST	46	49	52	55	58	61
B BODY LENGTH AT CB	63	65	67	69	71	73
C SLEEVE LENGTH	65	66,5	67,5	69	70	71,5

